

Pharmaceutical Industry Fellowship Program 2026-2027

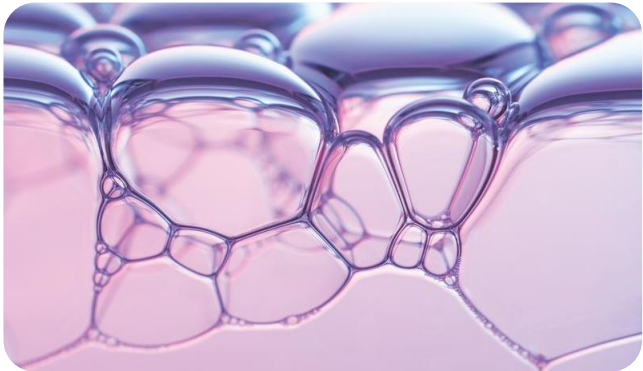
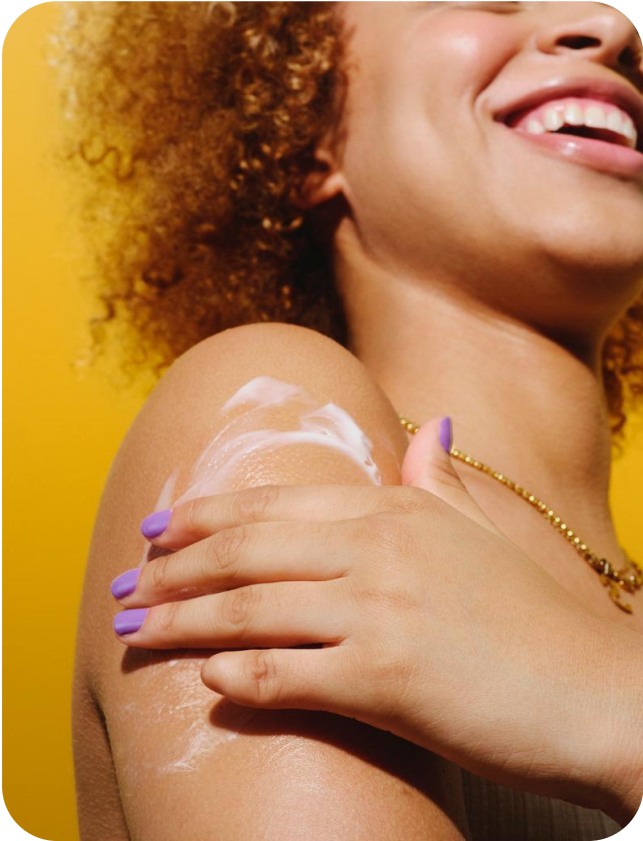


Table of Contents



About Kenvue

3

About Kenvue

Our Purpose and Values

Our Brands

Medical Affairs Fellowship

6

Program Overview

Medical Affairs Leadership

Program Objectives

Message from Past Fellows

Rutgers

11

About Kenvue

At Kenvue, our purpose is to realize the extraordinary power of everyday care. As a global leader at the intersection of healthcare and consumer goods, we are the [world's largest pure-play consumer health company](#) by revenue with \$15.5 billion in Net sales in the fiscal year 2024. By combining the power of science with meaningful consumer insights and our digital strategy, we empower consumers to live healthier lives every day. Built on more than a century of heritage and trusted by generations, our differentiated portfolio of iconic brands— including Tylenol®, Neutrogena®, Listerine®, Johnson's®, BAND-AID® Brand, Aveeno®, Zyrtec®, and Nicorette®— is backed by science and recommended by healthcare professionals, which further reinforces our consumers' connections to our brands.

Our portfolio includes [Self Care, Skin Health & Beauty, and Essential Health products](#), allowing us to connect with consumers across North America (NA), Asia Pacific (APAC), Europe, Middle East, and Africa (EMEA), and Latin America (LATAM)—in their daily rituals and the moments that matter most. Our products are marketed across more than 165 countries worldwide. Our global scale and the breadth of our brand portfolio are complemented by our well-developed capabilities and accelerated through our digital strategy, allowing us to dynamically capitalize on and respond to current trends impacting our categories and geographic markets.



Our Purpose

Realize the extraordinary power of everyday care

Our Values

We put people first

We stand for what's right, even when it's hard. Our work impacts consumers and colleagues, communities and generations, in daily rituals and in the moments that matter most. This incredible responsibility means every decision and action we take is guided by integrity and quality. Because when we put people first, performance will follow.

We care fiercely

We're driven to win for those we serve, and when we care fiercely for them and one another, we can deliver the best possible care. Together, we create an inclusive place where we can bring our whole selves. Our committed collaboration fuels our relentless external competitive drive — because the stronger our bonds are, the stronger our brands are, too.

We earn trust with science

From best practices to best-in-class products, we learn, test, partner and optimize. Then we move fast to bring real solutions into communities, homes and hands. With leading science and knowledge, we educate and empower — so that when people need us, they can rely on our brands.

We solve with courage

We see and solve for unheard needs. With empathy, we unearth extraordinary breakthroughs in everyday care, and with courage and conviction, we bring them to life. We boldly pursue more innovative ways of working, pioneer solutions that improve lives, and create products that create categories — then improve them again and again.



A new view
of care



Our Brands

Skin Health & Beauty

Neutrogena®

Aveeno.



DR.CI:LABO



Rogaine®

Self Care

TYLENOL®



Pepcid®



Motrin®

Imodium®



Essential Health

LISTERINE®

Johnson's®

BAND-AID®
BRAND ADHESIVE BANDAGES

NEOSPORIN®

Kenvue Medical Affairs Leadership

Segment Stakeholders



Asha Patel Shah
NA-MA Head of Skin Health
& Beauty



Daniel Budnitz
NA-MA Head of Self Care



Kerstin Wagner
NA-MA Head of Essential
Health & Medical Excellence

Fellowship Coordinator



Jaroslav Homola, PharmD
Manager, NA-MA, Medical
Information

Kenvue Medical Affairs Fellowship Program Overview

Recruiting: 3 positions

Length: 2 years (2026-2028)

Location: Summit, NJ (Kenvue Headquarters)

Over the course of this two-year fellowship, fellows will gain hands-on experience in Medical Affairs within the unique consumer health space. Therapeutic areas include*:

- Skin Health
- Beauty
- Pain
- Allergy
- Digestive Health
- Women's Health
- Nutritionals
- Oral Care
- Baby
- Wound Care

 Skin Health & Beauty

 Self Care (SC)

 Essential Health (EH)

Program Objectives

Medical Affairs

- Regularly participate on cross-functional teams which include Regulatory Affairs, Medical Affairs, Medical Safety, Research & Development, Clinical Operations and the North America Public Health teams
- Participate on innovative teams that aid in new consumer product development
- Participate in analysis and interpretation of clinical study data
- Learn how to identify and address potential medical issues and ensure implementation of risk-management strategies
- Participate in the development of medical strategies for company products
- Assist in the development of medical content for congresses, symposia, and advisory boards
- Provide medical support, training and education to Marketing & Sales
- Collect, review, interpret, and disseminate medical literature
- Develop core skills related to scientific exchange, medical materials development, customer communications, and medical content review
- Build relationships with internal and external business partners
- Improve scientific writing skills by authoring medical information response documents and escalated medical information requests
- Utilize critical thinking and clinical knowledge to develop fair and balanced communications of product information
- Support the promotional review committee to ensure that data included in promotional materials are appropriately supported by medical evidence

Other Opportunities

- Mentor PharmD students completing their clerkship rotations. Provide development feedback and monitor & assess student performance
- Engage in Healthcare Professional Scientist (HPS) activities
- Partake in stretch projects of interest in other therapeutic areas and departments/functions
- Attend congresses unique to affiliated therapeutic areas

Message from past Kenvue fellows

"Throughout my Global Scientific Engagement fellowship at Kenvue, I gained a comprehensive understanding of Medical Affairs with a focus on Healthcare Provider Engagement in the Skin Health & Beauty segment. I had the opportunity to contribute to the entire product development process, from ingredient innovation to the launch of multiple OTC and cosmetic products and post-launch scientific amplifications. I took advantage of the opportunity for leadership roles through Rutgers, where I served on the Alumni Relations Committee and attended multiple pharmacy conferences across the country to teach students about career options in the pharmaceutical industry. My fellowship experience provided a foundation of scientific and industry knowledge along with professional development and mentorship that prepared me well for my full-time role."

"This fellowship provided the opportunity to contribute in a meaningful way while fulfilling the core competencies of the program. Exposure to cross-functional teams while working on iconic OTC brands, coupled with direct coaching, has given me the foundation to seamlessly adapt in a dynamic industry. I have had the opportunity to lead scientific strategies in Clinical Research and Medical Affairs across multiple franchises that made an impact in my career. The working environment fosters professional growth through continuous learning and guidance from leaders who prioritize the development of fellows."



Kassidy Hubert, PharmD, RUCIF
Scientist, NA-MA, Skin Health & Beauty
[LinkedIn](#)



Ramond Waide, PharmD, RUCIF
Assoc. Manager, NA-MA, Hair & Scalp
[LinkedIn](#)





Rutgers Pharmaceutical Industry Fellowship (RPIF) Program

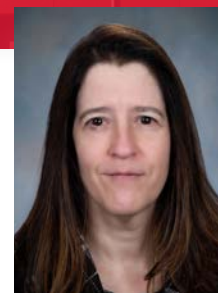
Ernest Mario School of Pharmacy (EMSOP)

Rutgers, The State University of New Jersey

The RPIF Program has thrived under the leadership of the founder, Dr. Joseph A. Barone, Dean and Distinguished Professor of EMSOP, Dr. Carolyn Seyss, the Executive Director for the Institute for Pharmaceutical Industry Fellowships, and Dr. Michael Toscani as the Director Emeritus.



Joseph A. Barone, PharmD, FCCP
Dean and Distinguished Professor



Carolyn Seyss, PharmD, RUCIF
Fellowship Executive Director



Michael Toscani, PharmD
Research Professor,
Fellowship Director Emeritus

Program History

1984

EMSOP and 2 pharmaceutical companies began a first-of-its-kind collaborative pilot program to evaluate the potential contributions of clinically-trained pharmacists within a pharmaceutical industry practice setting. Following the successful pilot, the RPIF Program grew significantly and expanded to now include 29 companies within the pharmaceutical and biopharmaceutical industry with over 300 Fellows.

2002

Dr. Ernest Mario generously provided an endowment to establish RPIF as an Institute to enhance and promote the role of pharmacists in industry through the RPIF Program. The Institute staff members:

- Create the Fellowship structure, providing strategic leadership and administrative support
- Promote quality, communication, scholarly activity, and professional development
- Arrange specialized training opportunities within the pharmaceutical and biopharmaceutical industry

2018

RPIF expanded to offer interdisciplinary Fellows' training by adding physician Fellowship opportunities to our well-established program.

2023

The RPIF Certificate is recognized with special credentials so our alumni can now proudly identify themselves as **RUCIF (Rutgers University Certified Industry Fellow)**.

Well over 1,800 Post-Doctoral Fellows have completed the RPIF Program, most of whom are experiencing influential and rewarding careers in the pharmaceutical and biopharmaceutical industry throughout the US and abroad. The RPIF Program has Preceptors and Mentors from industry who share their knowledge and experiences with the Fellows through an intense but closely-guided training program. Assignments and projects are challenging, meaningful, and designed to enhance understanding of the pharmaceutical and biopharmaceutical industry and the Fellow's functional area(s). Our goal is to provide the environment for Fellows to build the foundations to fuel their careers as future leaders in the industry.

Professional Development Series

All Fellows gather once monthly as a group to participate in the Professional Development Day (PDD) series, an important component of their training that complements the hands-on experience provided at the sponsor companies. The PDDs are steered by a committee of Fellows and are designed to enhance the Fellows' leadership skills such as emotional intelligence, communication, critical decision making, and presentation skills. Fellows develop skill sets under the guidance of external trainers and accomplished RPIF alumni. PDDs also provide general knowledge about various aspects of drug development/commercialization and issues facing the pharmaceutical and biopharmaceutical industry, and promote connectivity and a sense of community among Fellows and alumni from different companies and disciplines.

The Fellows can learn from each other through individual and group presentations on topics and issues related to the pharmaceutical and biopharmaceutical industry. In addition, outside experts provide training and professional development in a variety of areas (e.g., tools for corporate success, professional writing, presentations, meeting facilitation, negotiating, influencing, networking, conflict resolution, giving and receiving feedback, and business etiquette). Other PDD guest speakers include senior industry executives, including our successful RPIF Program alumni, who share their career paths, insights, and experiences. Importantly, PDDs provide an excellent opportunity for Fellows to interact with each other and develop lasting personal friendships and a strong professional network of Fellows, faculty, alumni, and other industry executives.

Key Program Features

RPIF FOSTERS the growth and development of future pharmaceutical and biopharmaceutical industry professionals and leaders through:

- F** **Family of Leading Companies**
Partners include several top global pharmaceutical/biopharmaceutical companies and offer large to small company environments.
- O** **Outstanding Alumni Track Record**
Well over 1,800 alumni hold prominent positions at many leading companies, including VP and C-suite levels.
- S** **Strong Network**
Fellows develop valuable, lasting connections with each other, alumni, Preceptors, and Rutgers EMSOP faculty.
- T** **Trusted and Proven Since 1984**
The Rutgers Fellowship Program is nationally recognized, trusted, and proven as the key pathway to industry, developing foundations for future leaders.
- E** **Enhanced Career Development**
Breadth of experiences informs career path choices, increasingly challenging assignments build depth of experience, and visibility creates opportunities - enhancing the potential for accelerated career paths.
- R** **Rigorous Academic Component**
Rutgers affiliation provides academic and professional development opportunities.

Because of its relationship with and close proximity to most of the nation's leading pharmaceutical and biopharmaceutical companies, EMSOP and the RPIF Program are uniquely capable of providing Fellows with advanced training in the pharmaceutical and biopharmaceutical industry.

Rutgers, The State University of New Jersey is one of the major state university systems in the United States. EMSOP is part of Rutgers Health and is the only state school of pharmacy in New Jersey. EMSOP is located on the University's main science and technology campus in Piscataway, New Jersey.

While RPIF offers all the benefits of a large program with an extensive network of distinguished professionals, Fellows receive the individual attention of a small program where they are known and supported as individuals.

Application Process and Eligibility Requirements

Pharmacy Fellows for the RPIF Program are selected on a nationally competitive basis. Candidates must have completed a Doctor of Pharmacy from an ACPE-accredited institution before July 1 of the fellowship term.

HOW TO APPLY:

The RPIF Program is highly competitive. **Candidates will be selected for interviews on a rolling basis, so we strongly encourage you to submit your application as soon as possible.**

Interested candidates may submit their application with short-answer questions and supporting materials (letter of intent, curriculum vitae, and 3 letters of recommendation) as soon as **October 8, 2025** by visiting our website at: <https://pharmafellows.rutgers.edu/how-to-apply/>

All application materials must be submitted electronically to the RPIF website per instructions on the site.

REQUIRED ITEMS:

SUBMIT BY:

Application with short-answer questions	October 17th
Letter of Intent (LOI)	October 17th
Curriculum Vitae (CV)	October 17th
Letters of Recommendation (LORs)	December 1st

ADDRESS LOI AND LORs TO:

Joseph A. Barone, PharmD, FCCP
Dean and Distinguished Professor
Ernest Mario School of Pharmacy
Rutgers, The State University of New Jersey
160 Frelinghuysen Road
Piscataway, NJ 08854-8020





"The RPIF Program hasn't just opened doors. It has changed the way I walk through them—more grounded in where I stand and more intentional in how I move forward. It has given me the opportunity to use my PharmD education to serve patients in new ways, shaping the conversations and decisions that impact their care. It has given me the confidence to speak up, the space to grow, and the kind of mentorship that sees your potential before you do. If you're ready to take the next step toward a career in the pharmaceutical industry, let RPIF be where your journey begins."

Pooja Singh, PharmD,
Global Regulatory Affairs and Global Value & Access Fellow
RPIF Chief Fellow



"Being a Rutgers Fellow has been such a pivotal part of my professional story, truly exceeding my expectations. This journey has transformed my leadership skills, giving me the confidence and tools I know I'll use every day. I'm grateful to be part of this community!"

Ginika Nwokeabia, PharmD
USMA/Medical Science Liaison - Neuroimmunology Fellow
RPIF Chief Fellow



"As a Rutgers Fellow, I have experienced an incredibly wide variety of opportunities through RPIF and my partner company. Through these opportunities I have learned and expanded my network more than I had ever imagined. The RPIF program encourages and facilitates all fellows growth into leaders and prepares us for our bright futures in the pharmaceutical industry."

Olivia Violette, PharmD
Global Medical Information Fellow
RPIF Chief Fellow



Aligned First Offer Date
December 12, 2025

The choice of a Post-Doctoral Industry Fellowship is an important decision. AIFA exists to promote a consensus first offer date for all Fellowship positions. We believe this is a positive reflection of the cultures our Programs offer, and that culture is a critical consideration in choice of Fellowship.

We hope that other academic and non-academic Fellowship Programs will NOT pressure candidates to accept offers prior to this AIFA-aligned offer date. Candidates should feel free to request an extension for any earlier offer to allow them to consider their options.